



don whitley  
scientific

[www.dwscientific.co.uk](http://www.dwscientific.co.uk)

## Whitley Workstations Whitley Petrifoto System



The Whitley Petrifoto System is an exciting new accessory for our range of Whitley Workstations. The product fits conveniently inside a workstation and enables you to take detailed photographs of Petri dishes during incubation. This is ideal when colony development needs capturing throughout the incubation cycle.

The system uses a quality Canon digital camera with auto focus, a wide angle zoom lens and a 12.1 megapixel sensor, all designed to ensure good quality images from even inexperienced photographers.

The camera can be used independently of the imaging system, either inside or outside the workstation.

The compact unit is small enough to pass through the airlock on every Whitley Workstation but is large enough to feature an innovative lighting system. The “3D” LED light box has independently controlled base and side lighting to illuminate all agar and colony types.

The Petrifoto System uses SD memory cards for image storage and is compatible with Eye-Fi wireless memory cards to allow automatic image transmission to a PC or MAC.

**Photograph bacteria during all stages of growth and incubation**

**The system can be used inside or outside a workstation; the camera can be used independently of the system**

**“3D” light box fitted with multiple daylight colour temperature LEDs for realistic colour rendition**

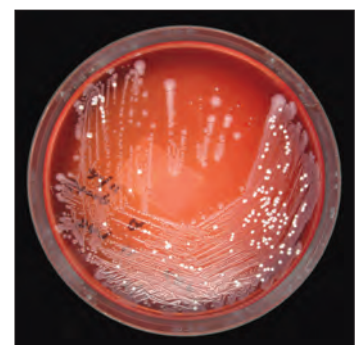
**Independently controlled base and side lighting - perfect for all agar and colony types**

**Compact size allows airlock transfer into any Whitley Workstation**

**Uses SD memory cards**

**Compatible with Eye-Fi wireless memory cards for automatic and convenient image transmission**

**Incorporates a quality Canon digital camera housed in a waterproof enclosure for protection against workstation humidity**



**An image produced using the Whitley Petrifoto System**

## Standard Features

Canon Digital IXUS 220 HS and Canon waterproof case  
64 high intensity LEDs, daylight colour temperature  
SanDisk 8GB Ultra SDHC memory card  
Sliding tray to accommodate 1 x 90mm Petri dish  
LED driver unit (positioned outside the workstation)

## System Requirements

Standard cable gland

## Specification

### A07207 Whitley Petrifoto System

A “3D” lightbox incorporating a Canon IXUS 220 HS digital camera, waterproof housing, separate LED driver unit, 1 x SD memory card with adaptor, spare camera battery with charger, storage case for spare battery/memory card and sliding tray Petri dish holder.

**Power Supply:** 100/240v  $\pm 10\%$  50/60Hz

#### Assembled system dimensions:

Lightbox & camera unit - 190mm/7.5”(w) x 235mm/9.25”(d) x 210mm/8.25”(h);

LED driver unit - 185mm/7.25”(w) x 210mm/8.25”(d) x 70mm/2.75”(h)

The LED driver unit is positioned outside the workstation

**Total System Weight:** 7kg

In the interests of a policy of continuous product improvement the company reserves the right to alter product specifications without prior notice. All rights reserved.  
© 2011 Don Whitley Scientific Limited.

### Don Whitley Scientific Limited

14 Otley Road, Shipley, West Yorkshire, BD17 7SE, England.

Telephone: +44 (0)1274 595728 Fax: +44 (0)1274 531197

Website: [www.dwscientific.co.uk](http://www.dwscientific.co.uk) Email: [info@dwscientific.co.uk](mailto:info@dwscientific.co.uk)